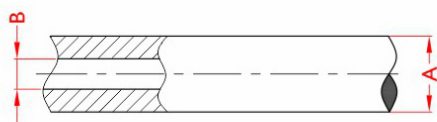


套管 Conduit

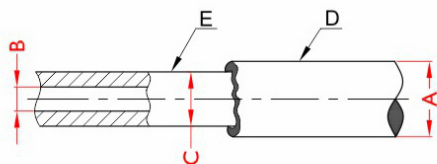


单层胶管 Single-layer Conduit



φA ±0.2mm	φB ±0.2mm	表面颜色 Surface Color	材质 Material	项目编号 Item No.
3.18	1.4	Black	PBT	C1-03214
3.18	1.57	Black	HDPE	C1-03216
4.0	1.7	Black	HDPE	C1-04017
4.18	1.9	Black	HDPE	C1-04219
5.0	2.1	Black / yellow / blue	PP	C1-05021
5.15	1.6	Black / Blue natural color	PP	C1-05216
7.1	4.06	Black	PE	C1-07141
8.06	4.37	Black	PE	C1-08144
9.65	5.59	Black	PE	C1-09756

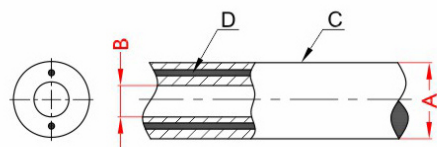
复合胶管 Two-layer Conduit



φA ±0.2mm	φB ±0.2mm	φC ±0.2mm	表面颜色 Surface Color	材质 Material		项目编号 Item No.
				D	E	
3.85	1.8	3.0	Black	PP	PBT	C2-03918
4.0	1.9	3.3	Black	PP	POM	C2-04019
5.0	1.7	3.6	Black/yellow Green/blue	PP	POM	C2-05017

- ◆ 主要用于卫浴洁具、汽车空调、园林机械油门线等拉索；
- ◆ 如果您需要其它规格的套管，请联系我们技术顾问，我们可以为您定制；
- ◆ Mainly used for Sanitary equipment, automotive air conditioning, garden machinery's throttle cable etc.
- ◆ It can be customized, if you want any other specs, please just feel free to contact us. Thanks.

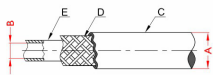
平行丝管 Double Wire Conduit



φA ±0.2mm	φB ±0.2mm	表面颜色 Surface Color	材质 Material		项目编号 Item No.
			C	D	
5.0	2.3	Black	PP	Steel wire	C3-05023
5.6	2.3	Black	PP	Steel wire	C3-05623

- ◆ 主要用于园林机械油门线等拉索。
- ◆ Mainly for throttle cable in Garden machines.

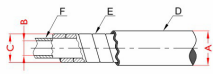
■ 编织网管
■ Braided Conduit



eA ±0.3mm	eB ±0.2mm	表面颜色 Surface Color	材质 Material			项目编号 Item No.
			C	D	E	
3.6	1.4	Black	PA	Steel wire	POM	C4-03614
4.36	1.6	Black	PP/PA	Steel wire	POM	C4-04416
5.0	1.9	Black	PP/PE	Steel wire	POM	C4-05019
13.2	8.0	Black	PU	Steel wire	PU	C4-13280
16.2	10.0	Black	PU	Steel wire	PU	C4-16210
18.6	12.0	Black	PU	Steel wire	PU	C4-18612

- ◆ 3.6-5.0 软管主要用于推杆；
- ◆ 13.2-18.6 软管主要用于保护轴、传递、和定位等；
- ◆ 如果您需要其它规格的软管，请联系我们技术问题，我们可以为您定制。
- ◆ e3.6-e5.0 Conduits mainly used for the Chair seat Cables.
- ◆ 13.2-18.6 Mainly used for protecting the flexible shaft, transfer and fixed position etc.
- ◆ It can be customized, if you want any other specs, please just feel free to contact us. Thanks.

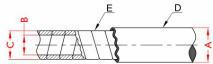
■ 扁丝管(含内衬管)
■ Flat Wire Conduit(Include Inner Tube)



eA ±0.3mm	eB ±0.2mm	eC ±0.2mm	表面颜色 Surface Color	材质 Material			项目编号 Item No.
				D	E	F	
3.6	1.3	2.9	Black	PVC	Steel wire	PE	C5-03613
3.9	1.3	2.9	Black	PVC	Steel wire	PE	C5-03913
4.0	1.5	3.4	Black	PVC	Steel wire	PE	C5-04015
5.0	2.2	3.95	Black	PVC/PEPP	Steel wire	PE/POM	C5-05022
6.0	2.8	4.75	Black	PVC	Steel wire	PE	C5-06028
7.0	3.2	5.9	Black	PVC	Steel wire	PE	C5-07032
8.0	3.8	6.8	Black	PVC	Steel wire	PE/POM	C5-08038
9.0	4.1	7.8	Black	PVC	Steel wire	PE	C5-09041
10.0	4.7	8.4	Black	PVC	Steel wire	PE	C5-10047
12.0	4.5	9.2	Black	PVC	Steel wire	POM	C5-12045

- ◆ 此软管应用最广泛；
- ◆ 主要用于汽车、座椅、电摩、童车、健身器等；
- ◆ This kind of Conduit is used most widely.
- ◆ Mainly used for Automobile, Seat, Electric Motorcycle, Pram, Fitness Equipment etc.

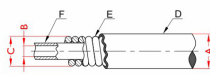
■ 扁丝管(不含内衬管)
■ Flat Wire Conduit(No Inner Tube)



eA ±0.3mm	eB ±0.2mm	eC ±0.2mm	表面颜色 Surface Color	材质 Material		项目编号 Item No.
				D	E	
7.0	4.0	5.5	Black	PVC	Steel wire	C6-07040
9.0	6.2	8.0	Black	PVC	Steel wire	C6-09062
11.0	7.0	9.0	Black	PVC	Steel wire	C6-11070
12.0	8.0	10.4	Black	PVC	Steel wire	C6-12080
13.0	9.0	11.2	Black	PVC	Steel wire	C6-13090

- ◆ 此类软管主要用于保护软管、传递、和定位等。
- ◆ This kind of Conduit mainly used for protecting the flexible shaft, transfer and fixed position and so on.

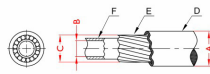
■ 圆丝管
■ Round Wire Conduit



eA ±0.2mm	eB ±0.2mm	eC ±0.2mm	表面颜色 Surface Color	材质 Material			项目编号 Item No.
				D	E	F	
5.8	2.2	4.9	Black	PVC	Steel wire	PE	C7-05822

- ◆ 此类管主要用于园林机械(油门, 控制线)；
- ◆ “E” 部位材质有 72A (本色) 和 72A (镀锌) 两种。
- ◆ This kind of Conduit is mainly used in garden machinery (throttle, control cable).
- ◆ The material of “E” part could be 72A (Natural Color) or 72A (Zinc plating).

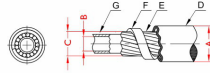
■ 直丝管
■ Straight Wire Conduit



eA ±0.2mm	eB ±0.2mm	eC ±0.2mm	表面颜色 Surface Color	材质 Material			项目编号 Item No.
				D	E	F	
4.18	1.8	3.1	Black	PP	Steel wire	PE	C8-04218
5.0	2.0	3.7	Black/Grey	PE	Steel wire	PE	C8-05020
6.3	2.2	5.2	Red	PE	Steel wire	POM	C8-06322
9.5	3.8	7.5	Red	PE	Steel wire	POM	C8-09538
10.0	4.2	7.8	Grape purple	PE	Steel wire	POM	C8-10042

- ◆ 直丝管主要用于汽车换挡线及各种液压传动系统的控制，具有高抗拉及高抗压强度。
- ◆ Straight wire conduit mainly used for the automotive's shift cable and all kinds of hydraulic drive system's control, with high tensile strength and high compressive strength.

■ 钢带钢丝管
■ Straight Wire Conduit
With Steel Strip



eA ±0.2mm	eB ±0.2mm	eC ±0.2mm	表面颜色 Surface Color	材质 Material				项目编号 Item No.
				D	E	F	G	
6.9	2.5	5.3	Grey	PP	Steel wire	Steel wire	POM	C9-06925
11.3	4.6	8.3	Black	PE	Steel wire	Steel wire	POM	C9-11346